

**VENIT**  
WWW.QDVENIT.COM  
**SLEEVE**

# ALUMINIUM SLEEVE

## Aluminium Ferrules

### Specification EN 13411-3 ( DIN 3093 )

VENIT aluminum ferrules are manufactured per EN13411-3 (DIN 3093) from #1 to #60. For safety in fabrication and application, our ferrules are made of strictly material corresponding to the requirements of EN 13411-3 (DIN 3093) regarding material composition and mechanical properties.



PART NO.	FERRULE CODE.	A (mm)	B (mm)	S (mm)	L (mm)	WEIGHT Kgs/1000Pcs	L' (mm) GB 6946-93
SL990010	1	1.2	2.4	0.65	5	0.098	-
SL990015	1.5	1.7	3.4	0.75	6	0.176	-
SL990020	2	2.2	4.4	0.85	7	0.285	-
SL990025	2.5	2.7	5.4	1.05	9	0.439	-
SL990030	3	3.3	6.6	1.25	11	0.907	-
SL990035	3.5	3.8	7.6	1.5	13	1.18	-
SL990040	4	4.4	8.8	1.7	14	1.63	-
SL990045	4.5	4.9	9.8	1.9	16	2.39	-
SL990050	5	5.5	11.0	2.1	18	3.62	-
SL990060	6	6.6	13.2	2.5	21	5.87	25
SL990065	6.5	7.2	14.4	2.7	23	7.18	-
SL990070	7	7.8	15.6	2.9	25	9.83	30
SL990080	8	8.8	17.6	3.3	28	12.96	34
SL990090	9	9.9	19.8	3.7	32	18.94	38
SL990100	10	10.9	21.8	4.1	35	24.09	42
SL990110	11	12.1	24.2	4.5	39	35.35	47
SL990120	12	13.2	26.4	4.9	42	44.18	50
SL990130	13	14.2	28.4	5.4	46	59.86	55
SL990140	14	15.3	30.6	5.8	49	73.5	59
SL990160	16	17.5	35.0	6.7	56	111	67
SL990180	18	19.6	39.2	7.6	63	156	76
SL990200	20	21.7	43.4	8.4	70	217	84
SL990220	22	24.3	48.6	9.2	77	292	92
SL990240	24	26.4	52.8	10.0	84	376	101
SL990260	26	28.5	57.0	10.9	91	481	109
SL990280	28	31.0	62.0	11.7	98	603	118
SL990300	30	33.1	66.2	12.5	105	739	126
SL990320	32	35.2	70.4	13.4	112	897	134
SL990340	34	37.8	75.6	14.2	119	1077	143
SL990360	36	39.8	79.6	15.0	126	1275	152
SL990380	38	41.9	83.8	15.8	133	1503	160
SL990400	40	44.0	88.0	16.6	140	1734	168
SL990420	42	46.2	92.4	17.5	147	2024	-
SL990440	44	48.4	96.8	18.3	154	2314	184
SL990460	46	50.6	101.2	19.2	161	2662	-
SL990480	48	52.8	105.6	20.0	168	3010	200
SL990500	50	55.0	110.0	20.8	175	3412	-
SL990520	52	57.2	114.4	21.6	182	3813	216
SL990540	54	59.4	118.8	22.5	189	4293	-
SL990560	56	61.6	123.2	23.3	196	4772	232
SL990580	58	63.8	127.6	24.2	203	5326	-
SL990600	60	66.0	132.0	25.0	210	5880	248

\*The larger sizes of aluminium ferrules are available on request.

# ALUMINIUM SLEEVE

## Aluminium Oval Sleeves

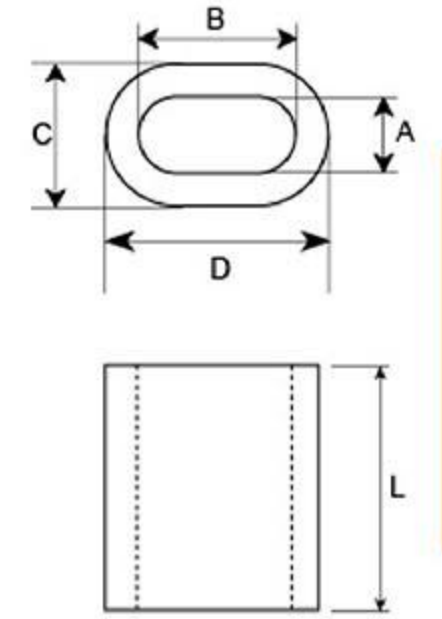
VENIT aluminum oval sleeves are extruded from a high quality aluminium alloy, and heat treated for excellent cold forming or swaging qualities.

Return eye splice using ALUMINIUM SLEEVES will attain 95% of Improved plow wire rope catalog strength when properly swaged.

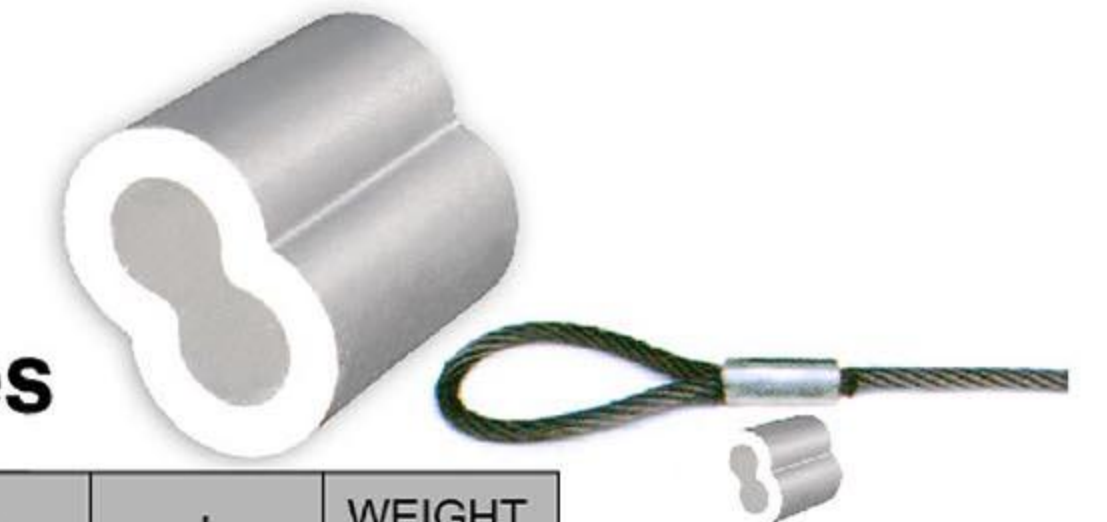
CAUTION: Return eye slings using oval aluminium sleeves must be properly swaged to attain strength.



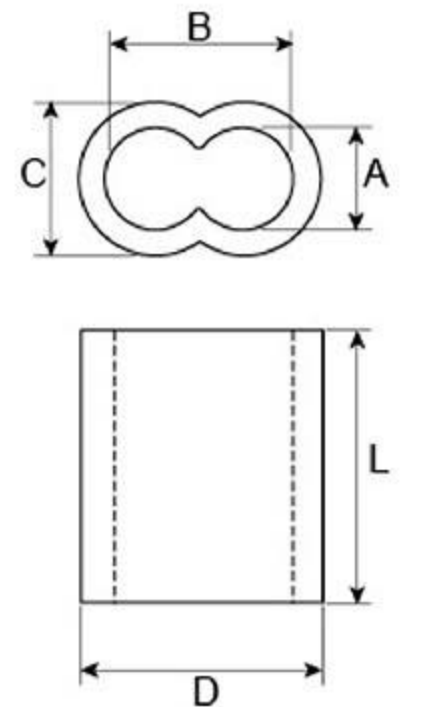
PART NO.	SIZE	A (in)	B (in)	C (in)	D (in)	L (in)	WEIGHT Lbs/100Pcs
SL990104	1/4"	19/64	19/32	17/32	27/32	1	2.3
SL990108	1/8"	5/32	5/16	11/32	1/2	5/8	0.66
SL990316	3/16"	7/32	7/16	7/16	21/32	1	1.65
SL990516	5/16"	3/8	3/4	21/32	1 1/32	1 17/84	4.3
SL990308	3/8"	7/16	27/32	3/4	1 5/32	1 3/8	5.3
SL990716	7/16"	1/2	1	29/32	1 13/32	1 23/32	11
SL990102	1/2"	19/32	1 11/64	1 1/32	1 5/8	1 15/16	16.5
SL990916	9/16"	23/32	1 3/8	1 7/32	1 57/64	2 7/32	22
SL990508	5/8"	3/4	1 1/2	1 3/8	2 3/32	2 1/2	32
SL990304	3/4"	53/64	1 11/16	1 1/2	2 3/8	2 7/8	52
SL990708	7/8"	61/64	1 7/8	1 11/16	2 5/8	3	67
SL991000	1"	1 3/32	2 7/32	1 31/32	3 3/32	3 3/4	125
SL991108	1 1/8"	1 9/32	2 9/16	2 5/16	3 19/32	4 9/32	172
SL991104	1 1/4"	1 13/32	2 25/32	2 1/2	3 7/8	4 7/16	214
SL991102	1 1/2"	1 21/32	3 19/64	3 1/8	4 3/4	5 35/64	390



## Aluminium Hourglass Sleeves



PART NO.	SIZE		A		B		C		D		L		WEIGHT Kgs/1000 Pcs
	in	mm	in	mm	in	mm	in	mm	in	mm	in	mm	
SL980364	3/64	1.19	1/16	1.59	1/8	3.18	9/64	3.6	13/64	5.2	3/8	9.5	0.276
SL980116	1/16	1.58	5/64	1.98	5/32	3.97	11/64	4.4	1/4	6.4	3/8	9.5	0.433
SL980564	5/64	1.98	3/32	2.38	3/16	4.76	13/64	5.2	5/16	7.9	3/8	9.5	0.645
SL980332	3/32	2.38	1/8	3.18	1/4	6.35	9/32	7.1	13/32	10.3	1/2	12.7	1.45
SL980108	1/8	3.18	5/32	3.97	5/16	7.94	11/32	8.7	1/2	12.7	5/8	15.8	2.70
SL980532	5/32	3.97	3/16	4.76	3/8	9.53	3/8	9.53	9/16	14.3	11/16	17.4	3.67
SL980316	3/16	4.76	7/32	5.56	7/16	11.11	7/16	11.11	21/32	16.7	1	25.4	7.18
SL980732	7/32	5.56	1/4	6.35	1/2	12.70	1/2	12.7	3/4	19	1-1/16	26.9	10.00
SL980104	1/4	6.35	9/32	7.14	9/16	14.29	17/32	13.5	13/16	20.6	1-1/8	28.5	11.76
SL980932	9/32	7.14	5/16	7.94	5/8	15.88	9/16	14.3	7/8	22.2	1-3/16	30.1	13.62
SL980516	5/16	7.94	3/8	9.53	23/32	19.05	11/16	17.5	1-1/32	26.2	1-1/4	31.7	20.94
SL980308	3/8	9.53	7/16	11.11	27/32	22.23	3/4	19.1	1-5/32	29.4	1-7/16	36.5	28.18
SL980716	7/16	11.11	1/2	12.7	1	25.40	15/16	23.8	1-7/16	36.5	1-11/16	42.8	52.00
SL980102	1/2	12.7	9/16	14.29	1-1/8	28.58	1-1/16	27	1-5/8	41.3	2	50.8	80.15
SL980916	9/16	14.29	5/8	15.88	1-1/4	31.75	1-1/8	28.6	1-3/4	44.5	2-1/8	53.9	99.88
SL980508	5/8	15.88	11/16	17.46	1-3/8	34.93	1-1/4	31.8	1-15/16	49.2	2-1/2	63.5	139.78



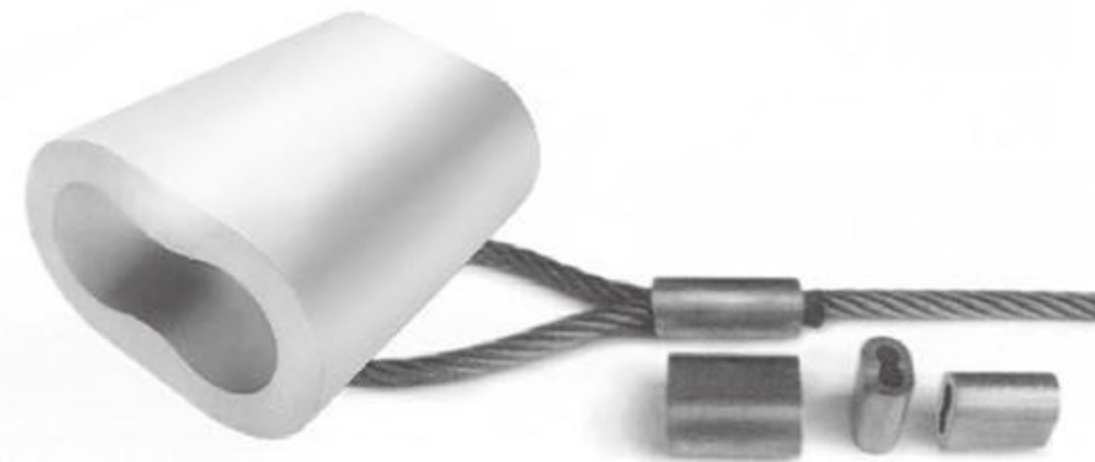
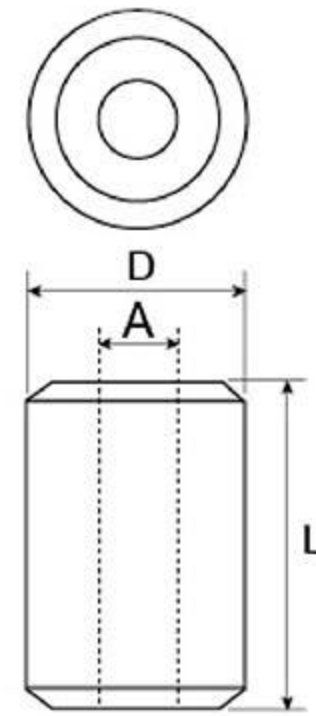
\*The larger sizes of sleeves are available on request.

# ALUMINIUM SLEEVE

## Aluminium Stop Buttons

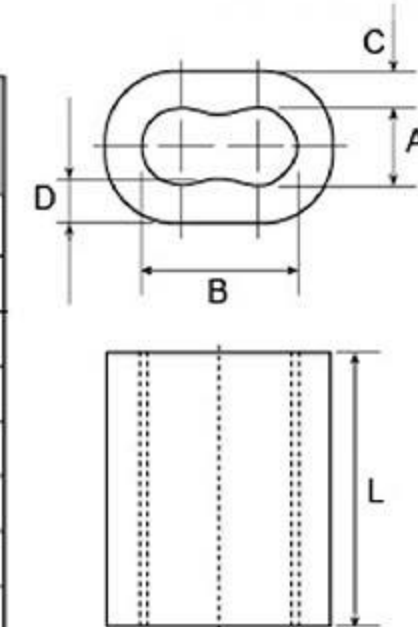


PART NO.	SIZE	A(mm) Inner Dia.	D(mm) Outer Dia.	L(mm) Length	WEIGHT Kgs/1000Pcs
SL970364	3/64"	1.54	4.40	4.16	0.236
SL970116	1/16"	1.92	6.35	4.16	0.278
SL970564	5/64"	2.38	6.35	4.16	0.282
SL970332	3/32"	2.90	8.72	7.95	1.05
SL970108	1/8"	3.86	8.72	7.95	0.949
SL970532	5/32"	4.70	11.11	8.73	1.76
SL970316	3/16"	5.54	11.11	8.73	1.69
SL970732	7/32"	6.35	11.11	8.73	1.50
SL970104	1/4"	7.20	17.46	17.46	9.07
SL970516	5/16"	9.53	17.46	17.46	7.46
SL970308	3/8"	11.13	17.46	17.46	6.58
SL970102	1/2"	14.28	26.98	26.98	30.32
SL970916	9/16"	15.88	28.60	31.75	38.52
SL970508	5/8"	17.46	31.75	31.75	47.88



## Aluminium Ferrules JIS Type

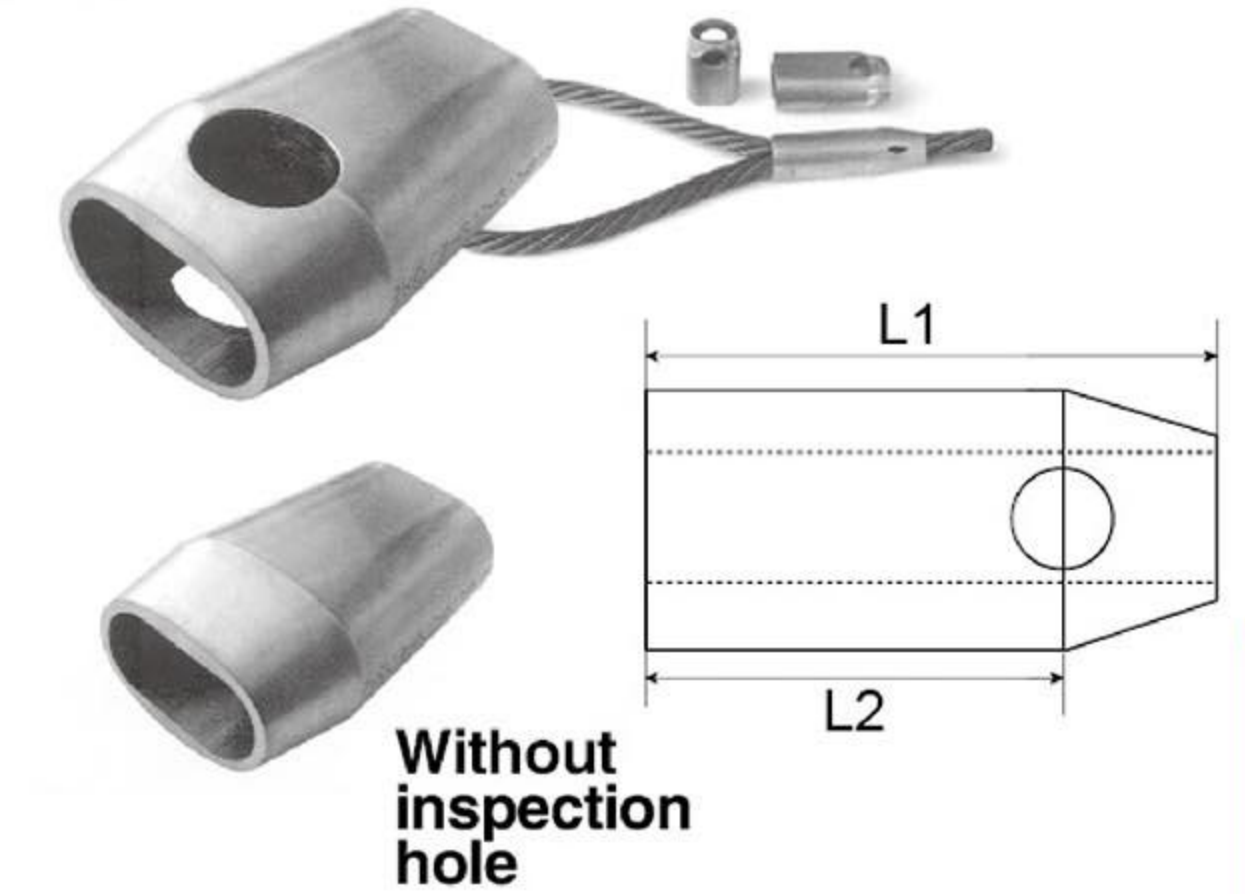
PART NO.	FERRULE CODE.	A (mm)	B (mm)	C (mm)	D (mm)	L (mm)	WEIGHT Kgs/1000Pcs
SL960060	6	7.00	13.80	3.20	3.80	24	10
SL960070	7	8.20	16.20	3.60	4.25	26	14
SL960080	8	9.40	18.60	4.00	4.70	32	22
SL960090	9	10.22	20.70	4.30	5.52	36	29
SL960100	10	11.60	23.00	4.50	5.50	40	37
SL960120	12	13.62	27.60	5.30	6.92	48	63
SL960140	14	15.89	32.20	5.53	7.42	56	88
SL960160	16	18.16	36.80	6.32	8.48	64	130
SL960180	18	20.43	41.40	7.11	9.54	72	186
SL960200	20	23.10	46.00	7.70	9.20	80	245
SL960220	22	25.40	50.60	8.30	10.00	88	319
SL960240	24	27.80	55.30	8.90	10.90	96	408
SL960260	26	29.90	59.80	10.70	12.90	104	581
SL960280	28	32.20	64.40	11.30	13.60	112	714
SL960300	30	34.50	69.00	11.80	14.30	120	859
SL960320	32	36.80	73.60	12.50	15.20	128	1026



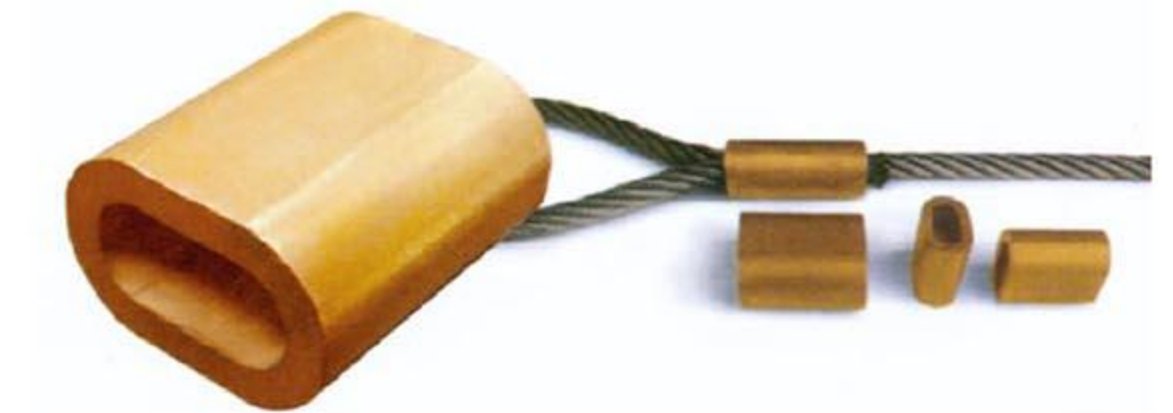
# ALUMINIUM & COPPER SLEEVE

## Aluminium Ferrules Form C

PART NO.	FERRULE CODE.	L1 (mm)	L2 (mm)
SL950080	8	43	34
SL950090	9	48	38.5
SL950100	10	53	42
SL950110	11	59	46.7
SL950120	12	65	50.2
SL950130	13	70	54.7
SL950140	14	75	58.2
SL950160	16	85	66.5
SL950180	18	96	75
SL950200	20	106	83
SL950220	22	116	91
SL950240	24	126	99.5
SL950260	26	136	107.2
SL950280	28	147	115.5
SL950300	30	158	125
SL950320	32	170	135
SL950360	36	190	150
SL950380	38	200	158
SL950440	44	235	186
SL950520	52	276	218

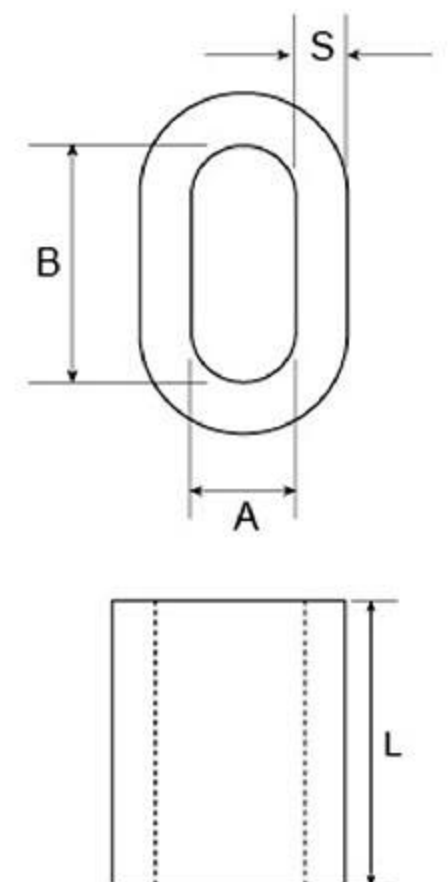


The inspection hole guarantees control of the correct inserted length of wire rope before and after swaging. These types of sleeves have to be swaged with the conical type C swaging dies.



## Copper Ferrules

PART NO.	FERRULE CODE.	A (mm)	B (mm)	S (mm)	L (mm)	WEIGHT kgs/1000pcs
SL890010	1	1.3	2.6	0.85	5	0.32
SL890015	1.5	1.8	3.6	1.05	6	0.72
SL890020	2	2.4	4.8	0.85	7	0.82
SL890025	2.5	2.7	5.4	1.10	9	1.70
SL890030	3	3.3	6.6	1.35	11	2.90
SL890035	3.5	3.9	7.8	1.60	13	4.50
SL890040	4	4.3	8.8	1.70	14	6.20
SL890045	4.5	5.1	10.2	1.90	16	8.90
SL890050	5	5.6	11.2	2.10	18	12.20
SL890060	6	6.7	13.4	2.50	21	20.00
SL890065	6.5	6.9	14.0	2.70	23	27.00
SL890070	7	7.5	15.0	3.00	25	32.00
SL890080	8	8.5	17.0	3.50	28	47.00
SL890090	9	9.9	19.8	3.70	32	68.00
SL890100	10	10.9	21.8	4.10	35	90.00
SL890110	11	11.6	23.2	4.20	39	122.00
SL890120	12	13.2	26.4	4.90	42	158.00
SL890130	13	14.2	28.4	5.40	46	198.00
SL890140	14	15.3	30.6	5.80	49	243.00
SL890160	16	17.5	35.0	6.70	56	366.00
SL890180	18	19.0	38.0	7.80	63	529.00



Zinc Plated, Nickle Plated & Chrome Plated are available on request

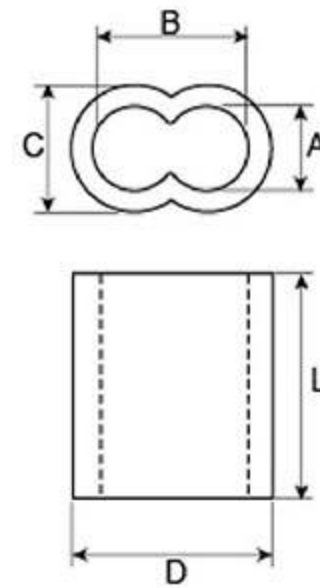
# COPPER SLEEVE

## Copper Hourglass Sleeves

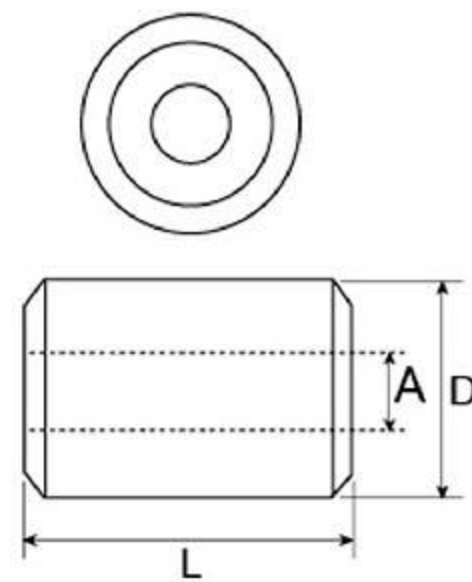
**VENIT** extruded copper hourglass sleeves and stop buttons have efficient cold forming properties, and are ideal for non-rusting permanent splices. These sleeves and buttons are 99% pure copper, and the mass of copper provides excellent holding strength.

Return eye splice using copper hourglass sleeves will attain 95% of Improved Plow wire rope catalog strength when properly swaged.

**CAUTION:** Return eye slings using copper hourglass sleeves must be properly swaged to attain strength.



PART NO.	SIZE	A	B	C	D	L	WEIGHT Kgs/1000Pcs
SL880364	3/64"	1/16	1/8	9/64	13/64	3/8	1.0
SL880116	1/16"	3/32	11/64	11/64	1/4	25/64	1.4
SL880564	5/64"	3/32	3/16	7/32	5/16	27/64	2.5
SL880332	3/32"	7/64	1/4	15/64	3/8	29/64	4.0
SL880108	1/8"	9/64	21/64	9/32	1/2	9/16	8.0
SL880532	5/32"	3/16	27/64	3/8	19/32	5/8	12.3
SL880316	3/16"	7/32	7/16	7/16	43/64	7/8	25
SL880732	7/32"	1/4	33/64	15/32	23/32	7/8	32
SL880104	1/4"	9/32	19/32	17/32	27/32	1 1/8	36
SL880516	5/16"	3/8	23/32	21/32	1 1/64	1 1/8	64
SL880308	3/8"	7/16	13/16	23/32	1 1/8	1 1/2	89
SL880102	1/2"	19/32	1 7/64	31/32	1 15/32	1 7/8	270



## Copper Button Stops

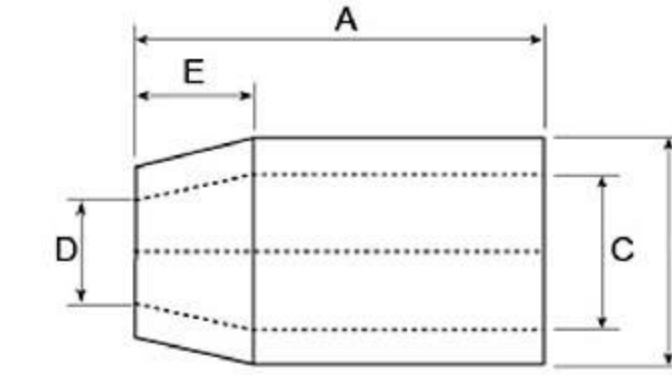
PART NO.	SIZE	A	D	L	WEIGHT Kgs/1000Pcs
SL870364	3/64"	1/16	11/64	7/32	0.67
SL870116	1/16"	5/64	13/64	7/32	0.96
SL870332	3/32"	7/64	21/64	21/64	3.9
SL870108	1/8"	5/32	21/64	21/64	3.3
SL870532	5/32"	3/16	27/64	21/64	6.5
SL870316	3/16"	7/32	27/64	21/64	6.2
SL870732	7/32"	1/4	27/64	5/8	6.0
SL870104	1/4"	9/32	21/32	11/16	32
SL870516	5/16"	3/8	21/32	11/16	29

Zinc Plated, Nickel Plated & Chrome Plated are available on request

# STEEL SLEEVE

## Flemish Eye Steel Swaging Sleeves(S-505)

Our modern in-house forging, heat treatment, sand blasting, auto-marking facilities assures the consistent quality of Flemish eye steel sleeves from 1/4" to 6". (galvanized and self-colored)



PART NO.	FOR WIRE ROPE SIZE (inch)	DIMENSION (inch)					MAX.AFTER SWAGE DIMENSIONS (inch)	WEIGHT Kgs/100Pcs
		A	B	D	E	C		
SL700104	1/4"	1	0.66	0.31	0.28	0.47	0.57	2.27
SL700516	5/16"	1.5	0.91	0.38	0.44	0.62	0.75	6.36
SL700308	3/8"	1.5	0.91	0.47	0.39	0.66	0.75	6.36
SL700716	7/16"	2	1.22	0.53	0.65	0.85	1.01	15
SL700102	1/2"	2	1.22	0.63	0.56	0.91	1.01	13
SL700916	9/16"	2.75	1.47	0.7	0.63	1.03	1.24	29
SL700508	5/8"	2.75	1.47	0.75	0.63	1.09	1.24	26
SL700304	3/4"	3.19	1.72	0.91	0.84	1.28	1.46	40
SL700708	7/8"	3.56	2.03	1.03	1	1.53	1.68	60
SL701000	1"	4	2.28	1.16	1.13	1.72	1.93	89
SL701108	1-1/8"	4.8	2.5	1.28	1.25	1.94	2.13	118
SL701104	1-1/4"	5.19	2.78	1.44	1.41	2.16	2.32	161
SL701308	1-3/8"	5.81	3	1.56	1.56	2.38	2.52	192
SL701102	1-1/2"	6.25	3.25	1.69	1.69	2.63	2.71	227
SL701304	1-3/4"	7.25	3.84	1.94	1.97	3.13	3.1	366
SL702000	2"	8.5	4.38	2.25	2.25	3.63	3.56	514
SL702104	2-1/4"	9.56	5.03	2.5	2.53	4.03	4.12	879
SL702102	2-1/2"	10.5	5.5	2.75	2.81	4.50	4.5	1068
SL702304	2-3/4"	11.5	5.75	3	3.09	4.75	4.7	1271
SL703000	3"	12	6	3.25	3.38	5	4.96	1335
SL703104	3-1/4"	13	6.5	3.86	3.54	5.43	5.37	1650
SL703102	3-1/2"	14	7	3.88	3.94	5.84	5.77	2106
SL703304	3-3/4"	15	7.5	4.06	4.25	6.31	6.23	2497
SL704000	4"	16	8.13	4.38	4.50	6.81	6.69	3087
SL704102	4-1/2"	18	9.13	4.88	5.06	7.66	7.45	4540
SL705000	5"	20	10.52	5.5	5.63	8.73	8.28	6600
SL706000	6"	24	12.54	6.5	6.75	10.2	9.93	12300

⚠ Recommended to be used with 6x19, 6x25, 6x29, 6x37 IPS or XIP(EIP), FC or IWRC wire rope. If using with any other type of construction or grade of wire rope, it is recommended to make the breaking load test of the swaged termination to prove the adequacy of the assembly to be manufactured.

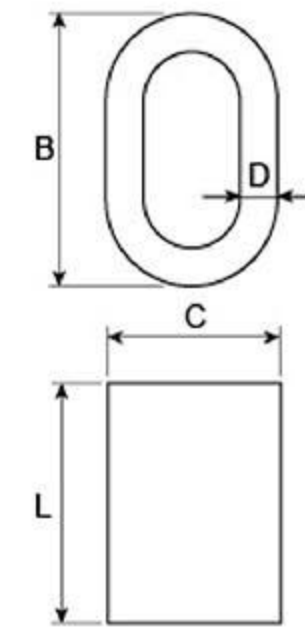
# STEEL SLEEVE

## Steel Oval Sleeves

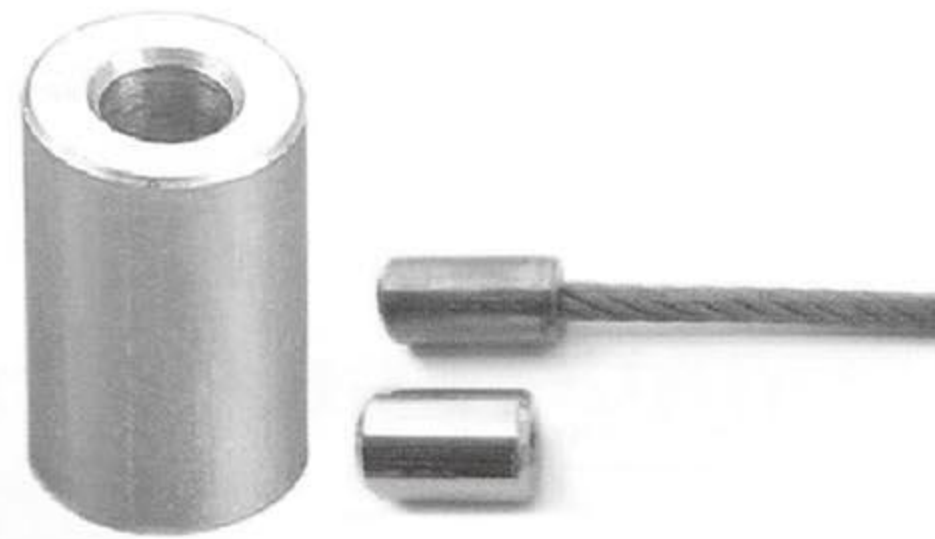
Specially processed low carbon steel

Note: Steel Oval Sleeves are recommended for use

with 6×19 or 6×37, IPS OR×IP(EIP), RRL,FC or IWRC wire rope



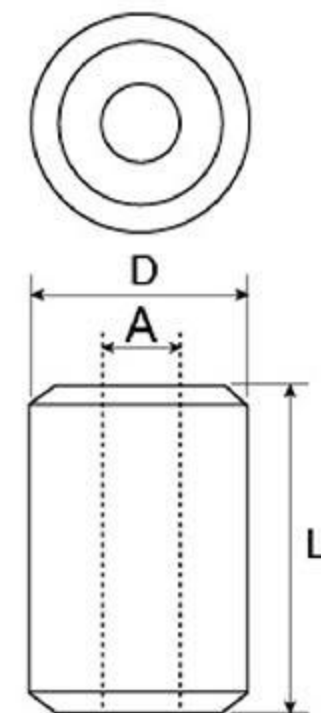
PART NO.	ROPE SIZE (inch)	L(in)	B(in)	C(in)	D(in)	MAX.AFTER SWAGE DIA. (inch)	WEIGHT Lbs/ 100Pcs
SL790516	5/16	1.25	1.08	0.81	0.19	0.77	17
SL790308	3/8	1.25	1.12	0.81	0.14	0.77	13
SL790716	7/16	1.63	1.41	1.02	0.19	1.03	31
SL790102	1/2	1.63	1.44	1.02	0.16	1.03	27
SL790916	9/16	2.25	1.72	1.23	0.23	1.29	63
SL790508	5/8	2.25	1.84	1.28	0.20	1.29	54
SL790304	3/4	2.63	2.16	1.52	0.23	1.55	90
SL790708	7/8	2.88	2.50	1.75	0.27	1.80	126
SL791000	1	3.06	2.84	2.00	0.33	2.05	187
SL791104	1-1/4	4.06	3.50	2.50	0.38	2.56	384



## Steel Stop Buttons

Specially processed low carbon steel

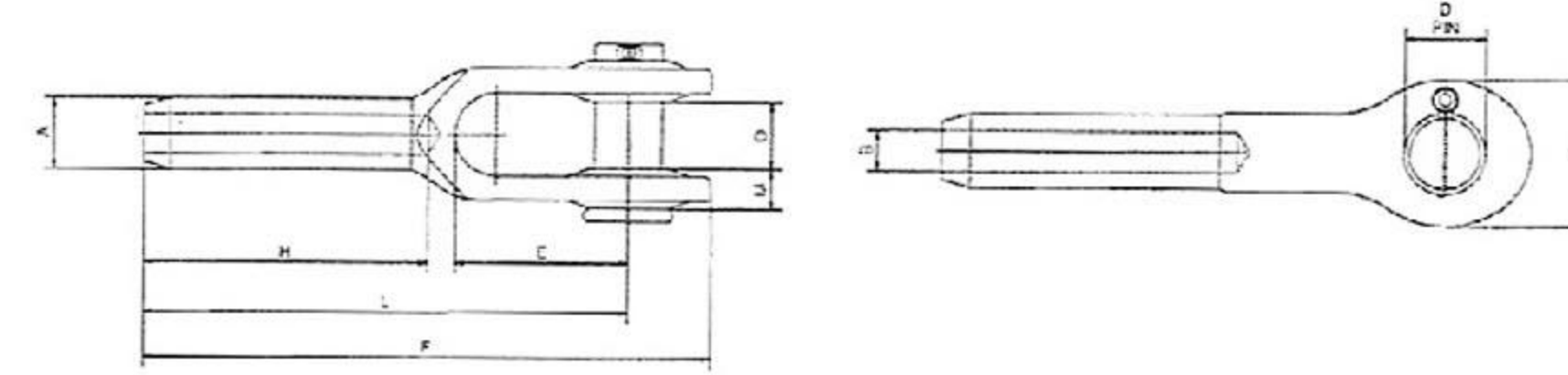
PART NO.	ROPE SIZE (inch)	A(in)	D(in)	L(in)	MAX.AFTER SWAGE DIA. (inch)	WEIGHT Lbs/ 100Pcs
SL770108	1/8	0.14	0.44	0.50	0.40	2
SL770316	3/16	0.20	0.56	0.70	0.52	4
SL770104	1/4	0.30	0.63	1.06	0.58	8
SL770516	5/16	0.36	0.88	1.13	0.77	16
SL770308	3/8	0.42	0.88	1.48	0.77	15
SL770716	7/16	0.48	1.13	1.63	1.03	30
SL770102	1/2	0.55	1.31	1.89	1.16	50
SL770916	9/16	0.61	1.44	2.02	1.29	70
SL770508	5/8	0.67	1.56	2.42	1.42	100
SL770304	3/4	0.79	1.69	2.73	1.55	131
SL770708	7/8	0.94	2.00	3.27	1.80	220
SL771000	1	1.06	2.25	3.67	2.05	310
SL771108	1-1/8	1.19	2.56	4.05	2.30	450
SL771104	1-1/4	1.33	2.81	4.58	2.56	650



Recommended to be used with 6x19, 6x25, 6x29, 6x37 IPS or XIP(EIP), FC or IWRC wire rope. If using with any other type of construction or grade of wire rope, it is recommended to make the breaking load test of the swaged termination to prove the adequacy of the assembly to be manufactured.

# STEEL SLEEVE

## Forged open swage terminals



PART NO.	ROPE SIZE (inch)	Dimensions(mm)										Weight each approx. Kg
		A	B	D	E	F	H	L	M	O	Y	
SL740104	1/4	12.6	6.9	17.5	38.1	120.7	54.0	101.6	7.9	17.5	34.9	0.3
SL740516	5/16	19.6	8.6	20.6	44.5	158.8	81.0	134.9	10.3	20.6	41.3	0.6
SL740308	3/8	19.6	10.3	20.6	44.5	158.8	81.0	134.9	10.3	20.6	41.3	0.5
SL740716	7/16	24.9	12.3	25.4	50.8	198.4	108.0	169.9	12.7	25.4	50.8	1.1
SL740102	1/2	24.9	13.9	25.4	50.8	198.4	108.0	169.9	12.7	25.4	50.8	1.1
SL740916	9/16	31.9	15.5	30.2	57.2	242.9	134.9	206.4	15.9	31.8	63.5	2.2
SL740508	5/8	31.9	17.1	30.2	57.2	242.9	134.9	206.4	15.9	31.8	63.5	2
SL740304	3/4	39.2	20.2	35.1	69.9	296.9	161.9	254.0	19.1	38.1	76.2	3.5
SL740708	7/8	43.2	23.8	41.4	82.6	346.1	188.9	295.3	23.8	44.5	85.7	5.4
SL741000	1	50.2	27.0	50.8	95.3	396.9	215.9	339.7	26.2	50.8	101.6	8.1
SL741108	1-1/8	57.0	30.2	57.2	108.0	444.5	242.9	381.0	30.2	57.2	114.3	13.1
SL741104	1-1/4	64.1	33.7	63.5	120.7	493.7	269.9	419.1	30.2	63.5	127.0	16.4
SL741308	1-3/8	71.1	36.9	63.5	133.4	539.8	296.9	460.4	33.3	63.5	133.4	21.6
SL741102	1-1/2	78.1	40.1	69.9	146.1	590.6	323.9	501.7	36.5	76.2	146.1	29.2
SL741304	1-3/4	86.0	47.2	88.9	171.5	689.0	377.8	584.2	42.9	88.9	177.8	42.4
SL742000	2	99.9	53.6	95.3	203.2	798.5	431.8	679.5	46.0	101.6	203.2	67.1
SL742104	2-1/4	113.0	59.9	108.0	171.5	835.0	485.8	704.9	65.1	114.3	222.3	78.5
SL742102	2-1/2	125.2	67.5	108.0	171.5	879.5	498.5	749.3	65.1	114.3	222.3	105.7
SL743000	3	151.4	80.4	133.4	219.1	1044.6	603.3	904.9	76.2	146.1	241.3	173.3



Wire rope terminations will not be adversely affected by temperatures between -40°C-150°C.

Swage terminals properly applied have an efficiency rating of more than 90% according to EN 13411-8.

### Material:

Forged from special C-1035 steel, fine grain, special bar quality.

Spheroidized annealed for cold swaging.

Applicable rope type and grade:

The tested class is 8\*19, fill factor 0.74, rope grade 2160.

The tested class is 6\*36(IWRC), fill factor 0.59, rope grade 2160.

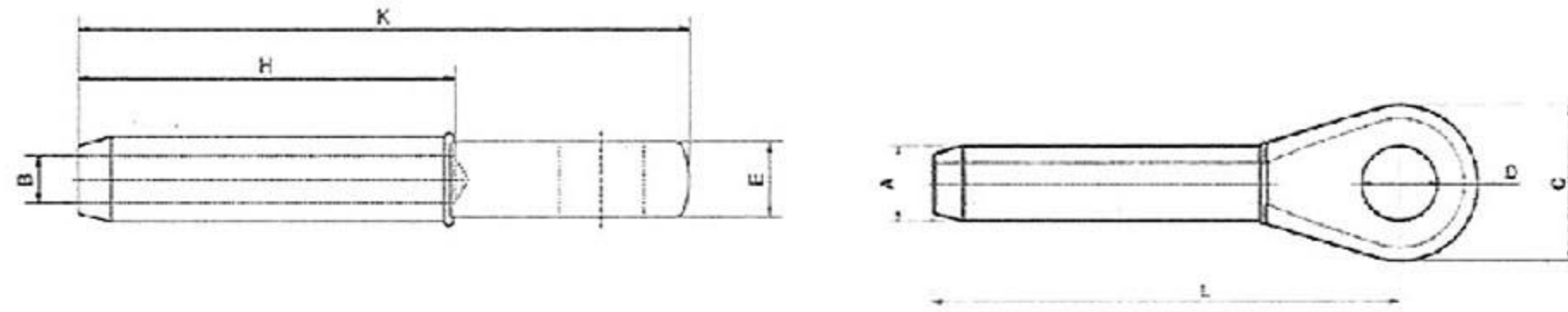
Swage terminals are also recommend for use on 6\*19 or 6\*37 IWRC regular lay ropes.

They are not recommended for use on fiber core or lang lay ropes.

### NOTE!

Due to the variety of steel wire ropes, it is difficult to approve all of them, Verifying tests must be performed in order to verify the strength of application. Steel wire rope with a fiber core has not been tested. Contact our Technical Department for more advice

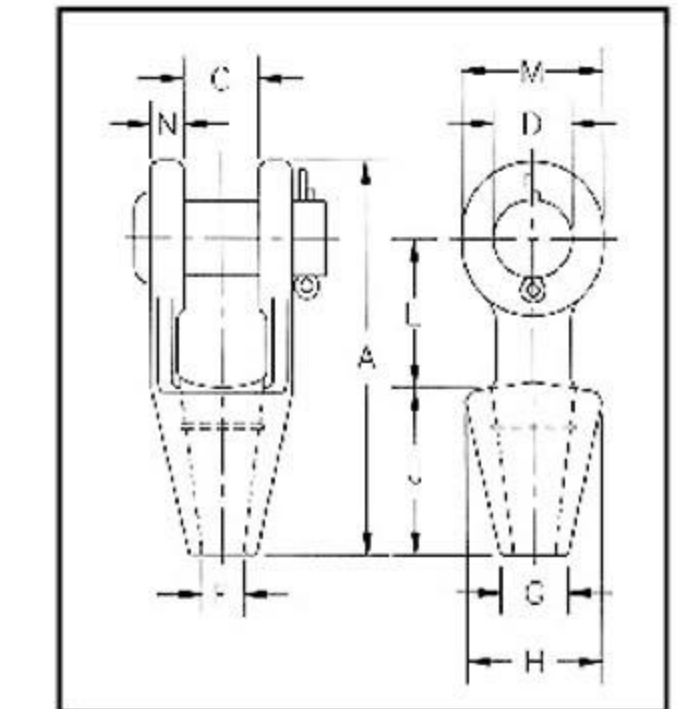
Forged closed swage terminals



PART NO.	ROPE SIZE (inch)	Dimensions(mm)								Weight each approx. Kg
		A	B	C	D	E	H	K	L	
SL730104	1/4	12.6	6.9	38.1	19.1	12.7	54.0	111.1	88.9	0.2
SL730516	5/16	19.6	8.6	42.9	22.2	17.5	81.0	139.7	114.3	0.3
SL730308	3/8	19.6	10.3	42.9	22.2	17.5	81.0	139.7	114.3	0.3
SL730716	7/16	24.9	12.3	50.8	27.0	22.2	108.0	176.2	146.1	0.7
SL730102	1/2	24.9	13.9	50.8	27.0	22.4	108.0	176.2	146.1	0.6
SL730916	9/16	31.9	15.5	63.5	31.8	28.6	134.9	222.3	184.2	1.3
SL730508	5/8	31.9	17.1	63.5	31.8	28.6	134.9	222.3	184.2	1.3
SL730304	3/4	39.2	20.2	76.2	36.5	33.3	161.9	263.5	219.1	2.3
SL730708	7/8	43.2	23.8	88.9	42.9	38.1	188.9	308.0	257.2	3.4
SL731000	1	50.2	27.0	101.6	52.4	44.5	215.9	349.3	292.1	5.1
SL731108	1-1/8	57.0	30.2	114.3	58.8	50.8	242.9	387.4	323.9	7.3
SL731104	1-1/4	64.1	33.7	127.0	65.1	57.2	269.9	438.2	365.1	10.3
SL731308	1-3/8	71.1	36.9	133.4	65.1	57.2	296.9	479.4	400.1	13.2
SL731102	1-1/2	78.1	40.1	139.7	71.5	63.5	323.9	517.5	431.8	17
SL731304	1-3/4	86.0	47.2	171.5	90.5	76.2	377.8	609.6	508.0	25.3
SL732000	2	99.9	53.6	196.9	96.9	82.6	431.8	698.5	584.2	40.8
SL732104	2-1/4	113.0	59.9	219.1	109.5	101.6	485.8	755.7	631.8	56.7
SL732102	2-1/2	125.2	67.5	219.1	109.5	101.6	498.5	790.6	666.8	64.4
SL733000	3	151.4	80.4	235.0	134.9	136.5	603.3	958.9	816.0	114.3



\* Forged Steel Sockets thru 1 1/2" , cast alloy steel 1-5/8" thru 4"  
 \* Spelter socket terminations have an efficiency rating of 100%,based on the catalog strength of wire rope.  
 Ratings are based on recommended use with 6x7, 6x19 or 6x37, IPS OR XIP, XXIP(EIP), RRL, FC, OR IWRC wire rope.



Grooved Open Spelter Sockets

Open Grooved Sockets meet the performance requirements of Federal Specification RR-S-550D, Type A, except for those provisions required of the contractor.

Note: Above drawing illustrates one groove used on sockets 1/4" thru 3/4" Size 7/8" thru 1 1/2" use 2 grooves, Sizes 1 5/8" and larger use 3 grooves.

Wire rope terminations will not be adversely affected by temperatures between -40°C -150°C.  
 Swage terminals properly applied have an efficiency rating of more than 90% according to EN 13411-8.  
 This rating is based on the catalogue strength of wire rope.

Material:

Forged from special C-1035 steel, fine grain, special bar quality.  
 Spheroidized annealed for cold swaging.

Applicable rope type and grade:

The tested class is 8\*19, fill factor 0.74, rope grade 2160.

The tested class is 6\*36(IWRC), fill factor 0.59, rope grade 2160.

Swage terminals are also recommend for use on 6\*19 or 6\*37 IWRC regular lay ropes.

They are not recommended for use on fiber core or lang lay ropes.

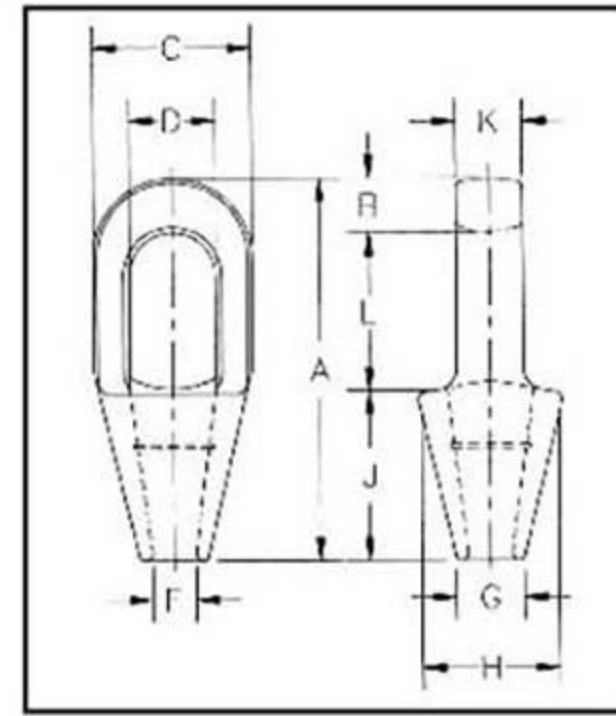
NOTE!

Due to the variety of steel wire ropes, it is difficult to approve all of them, Verifying tests must be performed in order to verify the strength of application. Steel wire rope with a fiber core has not been tested. Contact our Technical Department for more advice

PART NO.	ROPE SIZE (inch)	WEIGHT Lbs/ Pcs	Dimensione (in.)									
			A	C	D	F	G	H	J	L	M	N
SL720104	1/4	1.10	4.56	0.75	0.69	0.38	0.69	1.56	2.25	1.56	1.31	0.31
SL720516	5/16-3/8	1.30	4.84	0.81	0.81	0.50	0.81	1.69	2.25	1.75	1.50	0.44
SL720716	7/16-1/2	2.25	5.56	1.00	1.00	0.56	0.94	1.88	2.50	2.00	1.88	0.50
SL720916	9/16-5/8	3.60	6.75	1.25	1.19	0.69	1.13	2.25	3.00	2.50	2.25	0.56
SL720304	3/4	5.83	7.94	1.50	1.38	0.81	1.25	2.62	3.50	3.00	2.62	0.62
SL720708	7/8	9.65	9.25	1.75	1.63	0.94	1.50	3.25	4.00	3.50	3.13	0.80
SL721000	1	15.50	10.56	2.00	2.00	1.13	1.75	3.75	4.50	4.00	3.75	0.88
SL721108	1 1/8	21.50	11.81	2.25	2.25	1.25	2.00	4.12	5.00	4.62	4.12	1.00
SL721104	1 1/4-1 3/8	31.00	13.19	2.50	2.50	1.50	2.25	4.75	5.50	5.00	4.75	1.13
SL721102	1 1/2	47.25	15.12	3.00	2.75	1.63	2.75	5.25	6.00	6.00	5.38	1.19
SL721508	1 5/8	55.00	16.25	3.00	3.00	1.75	3.00	5.50	6.50	6.50	5.75	1.31
SL721304	1 3/4-1 7/8	82.00	18.25	3.50	3.50	2.00	3.13	6.38	7.50	7.00	6.50	1.56
SL722000	2-2 1/8	129.00	21.50	4.00	3.75	2.25	3.75	7.38	8.50	9.00	7.00	1.81
SL722104	2 1/4-2 3/8	167.00	23.50	4.50	4.25	2.50	4.00	8.25	9.00	10.00	7.75	2.13
SL722102	2 1/2-2 5/8	252.00	25.50	5.00	4.75	2.88	4.50	9.25	9.75	10.75	8.50	2.38
SL722304	2 3/4-2 7/8	315.00	27.25	5.25	5.00	3.12	4.88	10.50	11.00	11.00	9.00	2.88
SL723000	3-3 1/8	380.00	29.00	5.75	5.25	3.38	5.25	11.12	12.00	11.25	9.50	3.00
SL723104	3 1/4-3 3/8	434.00	30.88	6.25	5.50	3.62	5.75	11.88	13.00	11.75	10.00	3.12
SL723102	3 1/2-3 5/8	563.00	33.25	6.75	6.00	3.88	6.50	12.38	14.00	12.50	10.75	3.25
SL723304	3 3/4-4	783.00	36.25	7.50	7.00	4.25	7.25	13.62	15.00	13.50	12.50	3.50

# STEEL SLEEVE

- \* Forged Steel Sockets thru 1 1/2" , cast alloy steel 1-5/8" thru 4"
- \* Spelter socket terminations have an efficiency rating of 100%, based on the catalog strength of wire rope. Ratings are based on recommended use with 6x7, 6x19 or 6x37, IPS OR XIP, XXIP(EIP), RRL, FC, OR IWRC wire rope.

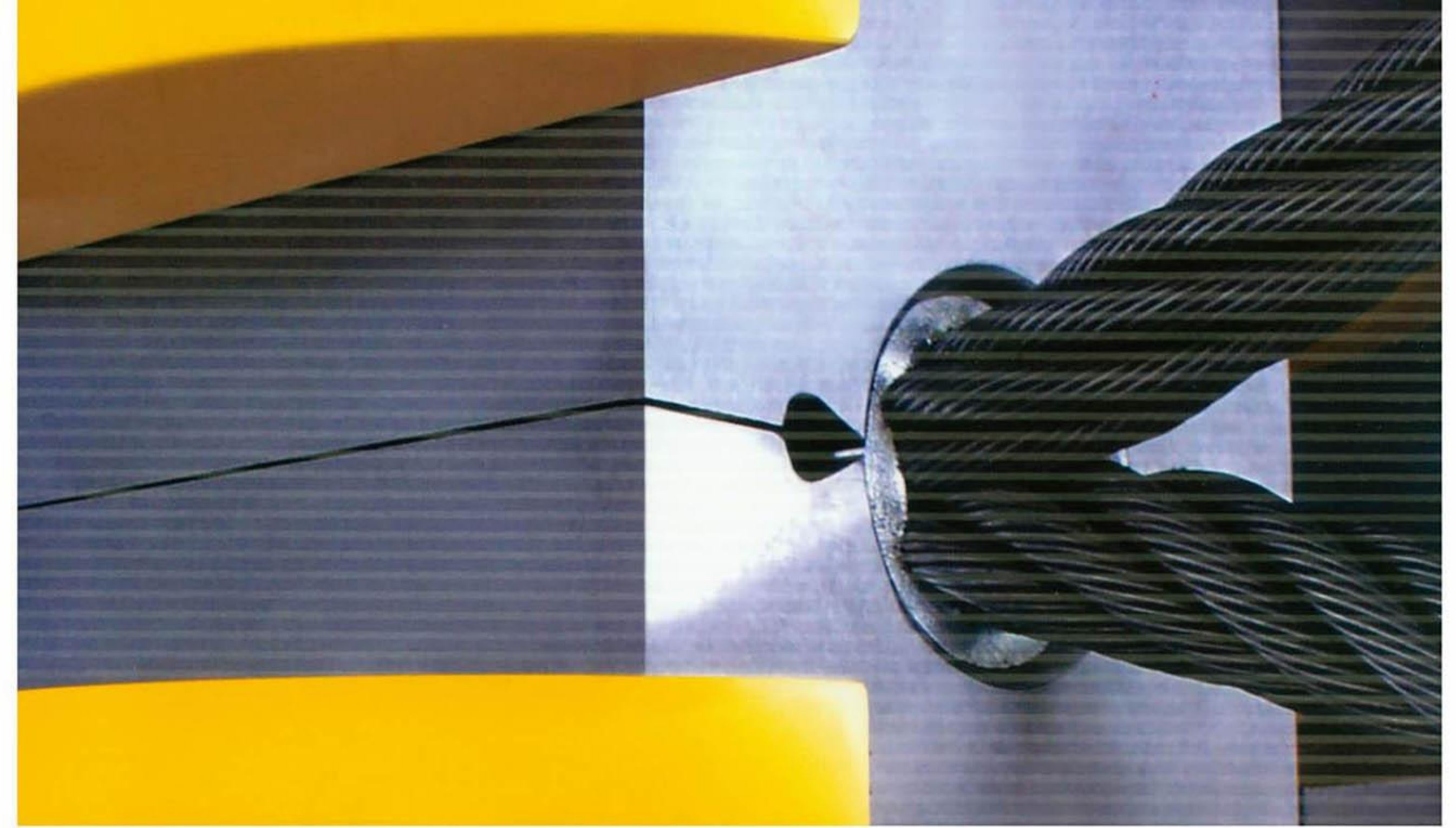


Note: Above drawing illustrates one groove used on sockets 1/4" thru 3/4" Size 7/8" thru 1 1/2" use 2 grooves, Sizes 1 5/8" and larger use 3 grooves.

## Grooved Closed Spelter Sockets

Closed Grooved Sockets meet the performance requirements of Federal Specification RR-S-550D, Type B, except for those provisions required of the contractor.

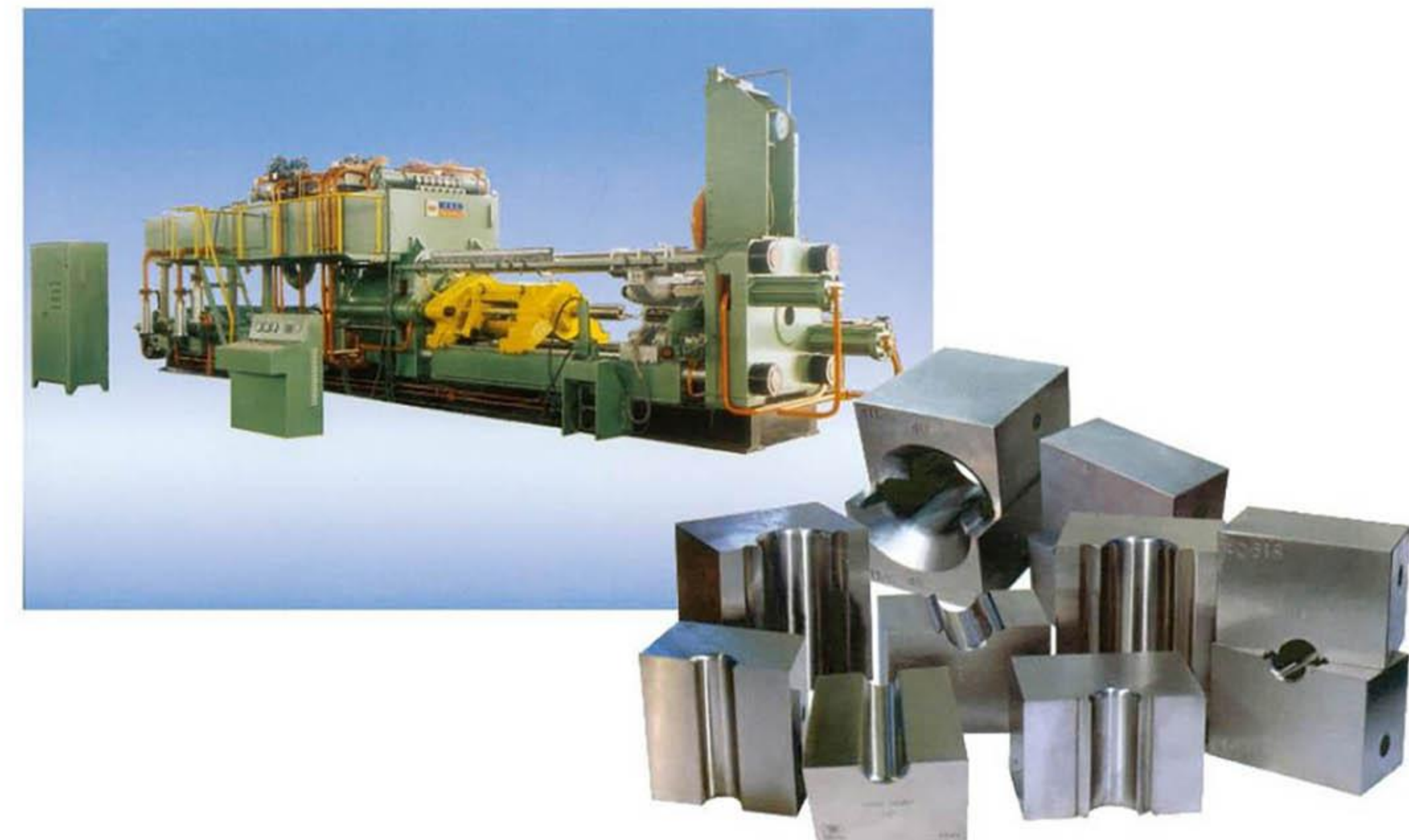
PART NO.	ROPE SIZE (inch)	WEIGHT Lbs/ Pcs	Dimensione (in.)									
			A	B	C	D	F	G	H	J	K	L
SL710104	1/4	0.50	4.50	0.50	1.50	0.88	0.38	0.69	1.56	2.25	0.50	1.75
SL710516	5/16-3/8	0.75	4.88	0.62	1.69	0.97	0.50	0.81	1.69	2.25	0.69	2.00
SL710716	7/16-1/2	1.50	5.44	0.69	2.00	1.16	0.56	0.94	1.88	2.50	0.88	2.25
SL710916	9/16-5/8	2.50	6.31	0.81	2.63	1.41	0.69	1.12	2.38	3.00	1.00	2.50
SL710304	3/4	4.25	7.56	1.06	3.00	1.66	0.81	1.25	2.75	3.56	1.25	3.00
SL710708	7/8	7.25	8.75	1.25	3.63	1.88	0.94	1.50	3.25	4.00	1.50	3.50
SL711000	1	10.50	9.88	1.38	4.13	2.30	1.13	1.75	3.75	4.44	1.75	4.00
SL711108	1 1/8	14.25	11.00	1.50	4.50	2.56	1.25	2.00	4.13	5.00	2.00	4.50
SL711104	1 1/4-1 3/8	19.75	12.12	1.63	5.30	2.81	1.50	2.25	4.75	5.50	2.25	5.00
SL711102	1 1/2	29.20	13.94	1.94	5.33	3.19	1.63	2.75	5.25	6.00	2.50	6.00
SL711508	1 5/8	36.00	15.13	2.13	5.75	3.25	1.75	3.00	5.50	6.50	2.75	6.50
SL711304	1 3/4-1 7/8	57.25	17.25	2.19	6.75	3.75	2.00	3.13	6.38	7.50	3.00	7.56
SL712000	2-2 1/8	79.00	19.50	2.44	7.63	4.38	2.25	3.75	7.38	8.50	3.25	8.56
SL712104	2 1/4-2 3/8	105.00	21.13	2.63	8.50	5.00	2.50	4.00	8.25	9.00	3.63	9.50
SL712102	2 1/2-2 5/8	140.00	23.50	3.12	9.50	5.50	2.88	4.50	9.25	9.75	4.00	10.62
SL712304	2 3/4-2 7/8	220.00	25.38	3.12	10.75	6.25	3.12	4.88	10.19	11.00	4.88	11.25
SL713000	3-3 1/8	276.00	27.00	3.25	11.50	6.75	3.38	5.25	11.50	12.00	5.25	11.75
SL713104	3 1/4-3 3/8	313.00	29.25	4.00	12.25	7.25	3.62	5.75	12.25	13.00	5.75	12.25
SL713102	3 1/2-3 5/8	400.00	31.00	4.00	13.00	7.75	3.88	6.50	13.00	14.00	6.25	13.00
SL713304	3 3/4-4	542.00	33.25	4.25	14.25	8.50	4.25	7.25	14.25	15.00	7.00	14.00



**VENIT**

WWW.QDVENIT.COM

SWAGING MACHINE



# SWAGING MACHINE

## Frame Style Hydraulic Swaging Machine SM350H/SM600H/SM1500H



### Structure and Characteristic

With importing foreign advanced technology and new process and improving our years of production practice, **VENIT** has developed a new generation of advanced wire rope swaging machine---Frame Hydraulhydraulic Swaging Machine.

- 1.The Frame are designed to use prestress wire rope wind-up technology, it distributes the stress around the frame homogeneously, and makes the Bodies never cracking.
- 2.With guiding and sliding devices on the die seats, the upper and lower dies can be replaced conveniently.

### Major Technique Specification and Parameter

Items	Unit	Data		
Model		SM350H	SM600H	SM1500H
Max.Pressure Capacity	KN	3500	6000	15000
Swaging Capacity				
Aluminum Sleeve		#28	#36	#62
Flemish Steel Ferrule		1-1/8"	1-3/4"	3-1/2"
Maximum Stroke	mm	130	145	200
Working Stroke	mm	90	120	150
System Pressure	Mpa	60/7	60/7	70/7
Motor Power	KW	4	4	7.5
Dimensions	mm	1500×635×1500	1500×660×1650	1800×960×2100
Approx.Weight	kgs	≈1750	≈2300	≈6200

The exquisite technology, creates the perfect product

# SWAGING MACHINE

## C-Type Hydraulic Swaging Machine SM350C/SM600C



### Structure and Characteristic

- 1.The C-Type bodies are made of one piece casting alloy steel, it makes the H-Quality Swaging Machine more durable and stronger.
- 2.Equipped with high pressure and low pressure oil pumps, the H-Quality Swaging Machine can steady load and unload so that the swaging quality is improved.
- 3.The dies are fully accessible in C-Type bodies design,allowing the rigger freely moves the slings around the swaging area.

### Major Technique Specification and Parameter

Items	Unit	Data	
Model		SM350C	SM600C
Max.Pressure Capacity	KN	3500	6000
Swaging Capacity			
Aluminum Sleeve		#28	#36
Flemish Steel Ferrule		1-1/8"	1-3/4"
Maximum Stroke	mm	110	140
Working Stroke	mm	85	120
System Pressure	Mpa	60/7	60/7
Motor Power	KW	4	4
Dimensions	mm	1300×600×1600	1500×660×650
Approx.Weight	kgs	≈1800	≈4500



# SWAGING MACHINE

## Frame Style Hydraulic Swaging Machine SM3000H/SM5000H



### Structure and Characteristic

- 1.The main working cylinder with "U" Type Cup Style Structural design, the piston and cylinder cover with latest style of over high pressure combined sealing device and high anti-wear guiding ring,it makes the cylinder more durable and more reliable.
- 2.With embedded design, the main cylinder is fixed in with the frame solidly.
- 3.Round independent dies can be set up and replaced quickly.
- 4.Swaging pressure value can be set by digital display and PLC control button.
- 5.With a strong afflatus of the Arc de Triomphe, SM3000H and SM5000H Swaging Machine looks grand and beautiful.

### Major Technique Specification and Parameter

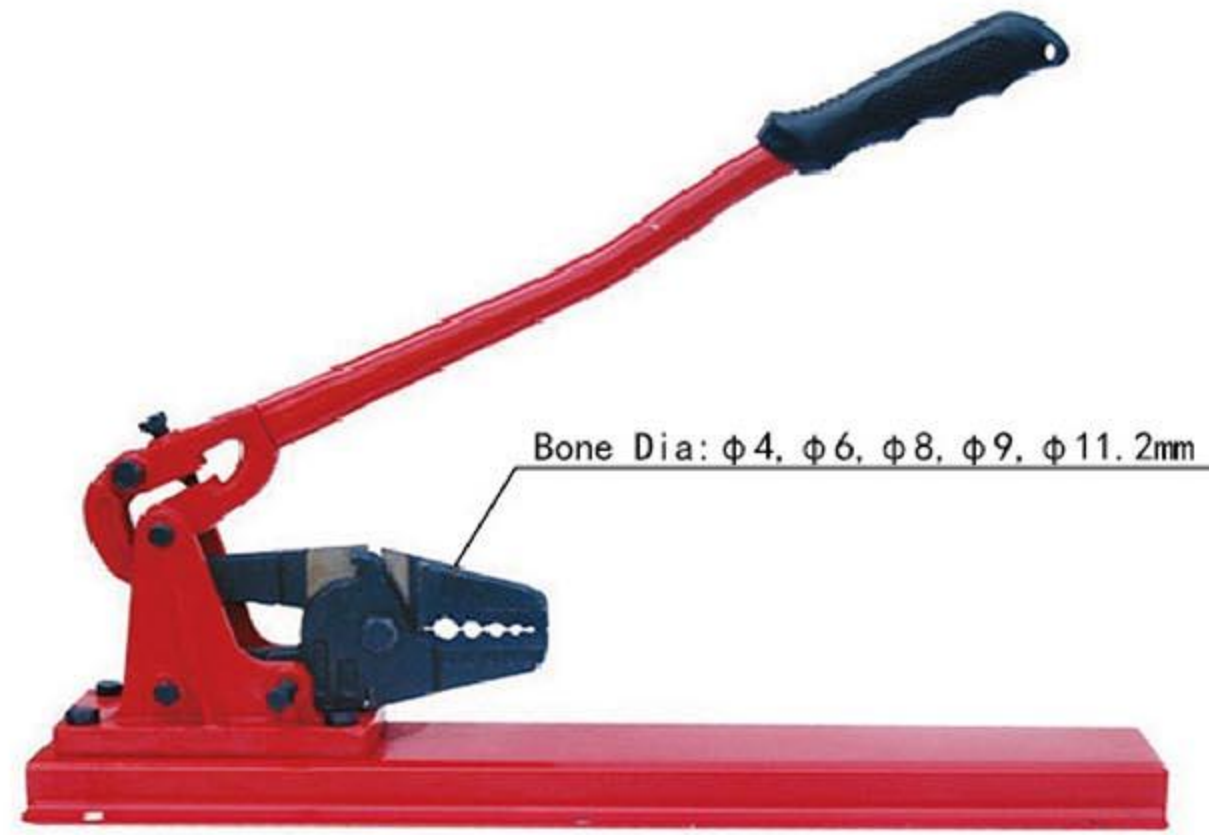
Items	Unit	Data	
Model		SM3000H	SM5000H
Max.Pressure Capacity	KN	30000	50000
Swaging Capacity			
Aluminum Sleeve		#84	#125
Flemish Steel Ferrule		5"	6"
Maximum Stroke	mm	270	420
Working Stroke	mm	240	370
System Pressure	Mpa	70/12	65/12
Motor Power	KW	7.2x2	7.5x4
Dimensions	mm	1270x1000x2800	1660x1275x3500
Approx. Weight	kgs	≈18000	≈30000



# MULTI-FUNCTION SWAGING TOOL

## Multi-function Swaging Tool Bench Type

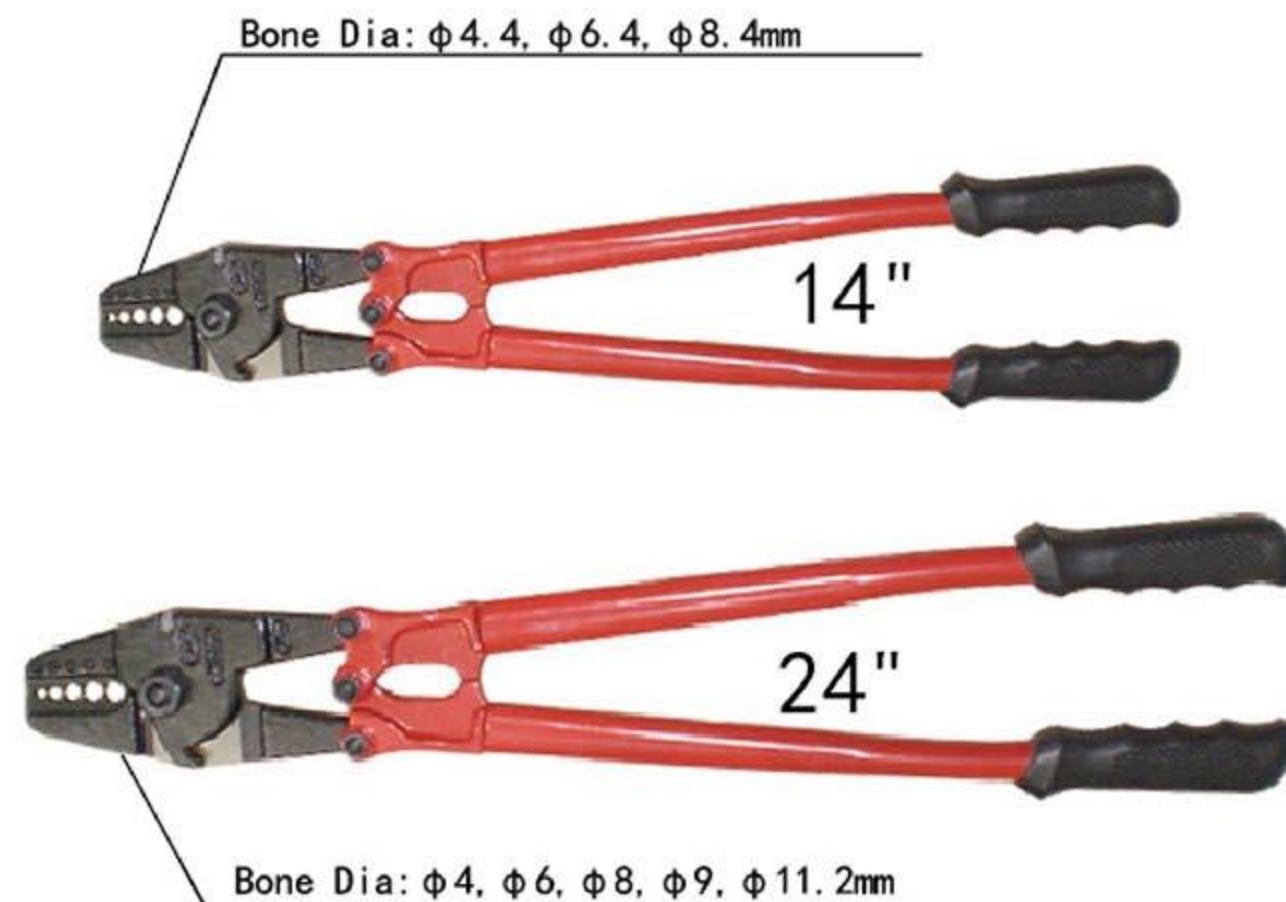
Part No.	Size	N.W. kgs
MMBS2400	24"	2.5



Head drop-forged with alloy steel, body special heat treatment  
 Cutting edges induction quenched  
 Joint arms drop-forged, base precision casted, base measures 3 x 6" (76 x 152mm)  
 Used for cutting 6mm wire rope and press 1/16" - 3/16" oval sleeve (Aluminum)  
 Operating by one hand for easy cutting

## Multi-function Swaging Tool

Part No.	Size	N.W. kgs
MMHS1400	14"	1.05
MMHS2400	24"	2.5



Blades drop-forged with high quality alloy steel, Body heat treatment  
 Cutting edges induction quenched,  
 Used for cutting 6mm wire rope and press 1/16" - 3/16" oval sleeve (Aluminum)  
 Industry class quality

# BOLT CUTTER

## Bolt Cutter, European Type

Drop forged blades with high quality carbon steel, body heat treatment, cutting edges induction quenched, easy adjustment, cutting ability ≤ HRC30

Part No.	Size inch	soft mm	medium mm	N.W. kgs
MECC1200	12	5	4	0.73
MECC1400	14	7	5	0.90
MECC1800	18	8	6	1.45
MECC2400	24	10	8	2.50
MECC3000	30	13	10	3.80
MECC3600	36	16	12	5.40
MECC4200	42	19	14	8.33
MECC4800	48	22	16	8.67



## Bolt Cutter, European Type

Drop forged blades with Cr-V steel, body heat treatment, cutting edges, special straps, easy adjustment, cutting ability ≤ HRC40

Part No.	Size inch	soft mm	medium mm	N.W. kgs
MEAC1200	12	5	4	0.73
MEAC1400	14	7	5	0.90
MEAC1800	18	8	6	1.45
MEAC2400	24	10	8	2.50
MEAC3000	30	13	10	3.80
MEAC3600	36	16	12	5.40
MEAC4200	42	19	14	8.33
MEAC4800	48	22	16	8.67



## Bolt Cutter, American Type

Drop forged blades with high quality carbon steel, body heat treatment, black finished on blades, easy adjustment, cutting ability ≤ HRC30



Drop forged blades with high quality carbon steel, body heat treatment, black finished on blades, easy adjustment, cutting ability ≤ HRC30

Part No.	Size inch	soft mm	medium mm	N.W. kgs
MUCC1200	12	5	4	0.70
MUCC1400	14	7	5	0.90
MUCC1800	18	8	6	1.45
MUCC2400	24	10	8	2.20
MUCC3000	30	13	10	4.00
MUCC3600	36	16	12	5.20
MUCC4200	42	19	14	8.33